



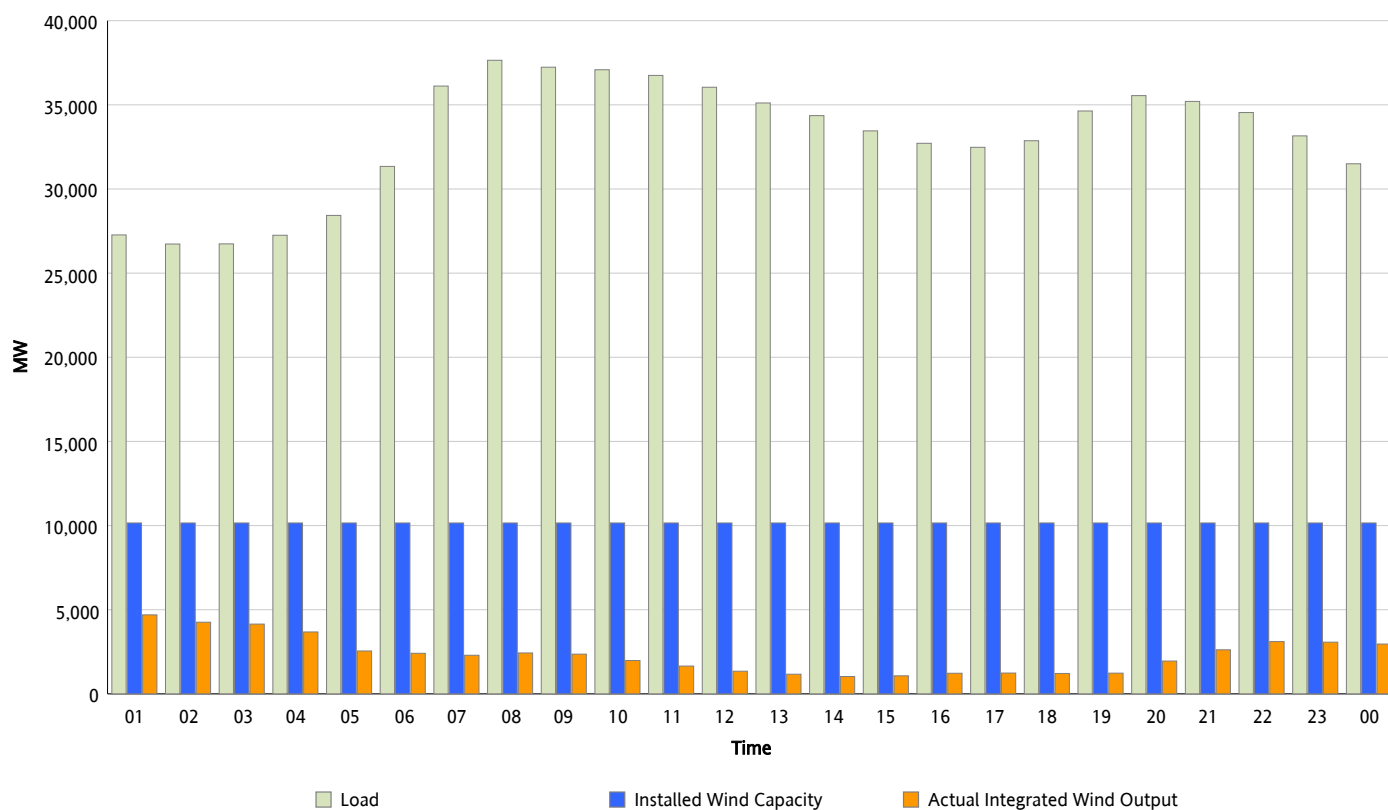
ERCOT Grid Operations

Wind Integration Report : 02/22/2013

Peak Load	37,648 MW
Load Peak Hour (HE)	08
Wind Over Peak	2,431 MW
Wind Record 02/09/13	9,481 MW
Max Wind Value*	4,879 MW
Wind Peak Time	00:34
Wind Integration %	17.88 %

Hourly Average Actual Load vs. Actual Wind Output

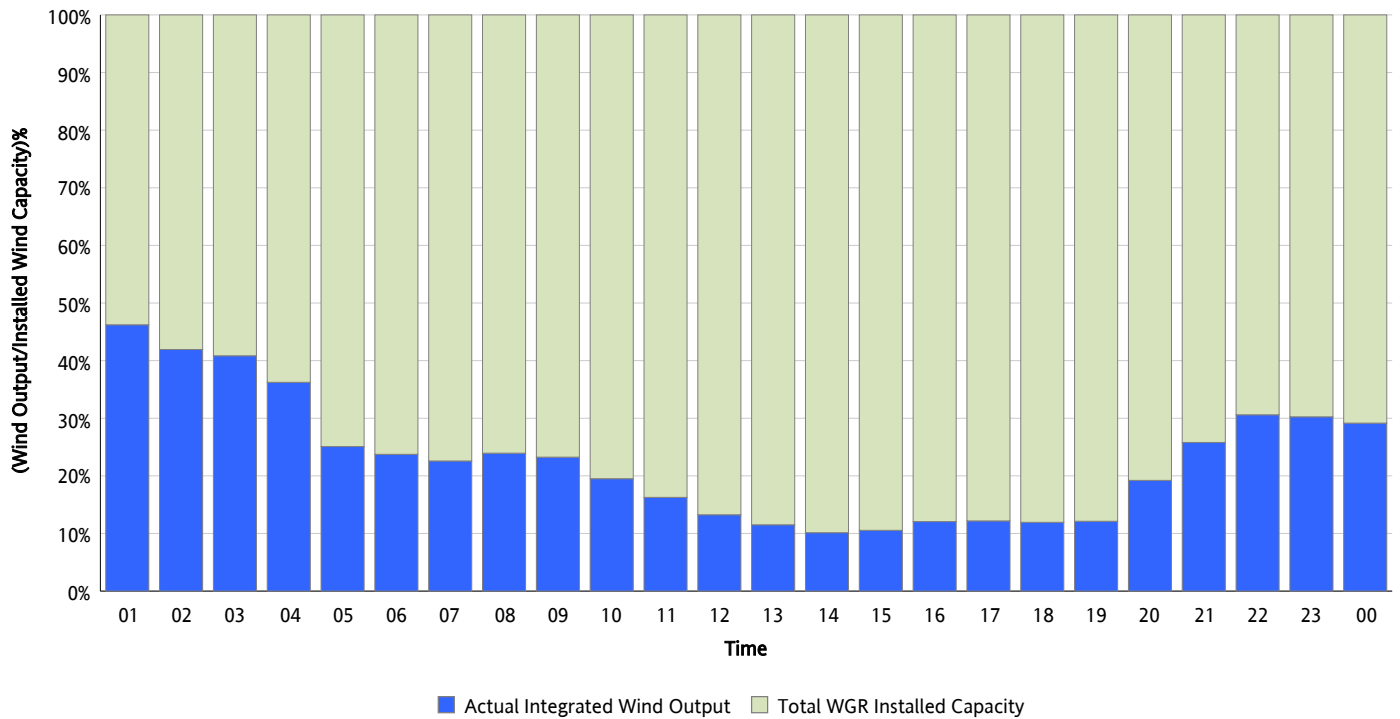
02/22/2013



* Wind Record and Wind Max represent instantaneous values and the rest of the values are integrated over the hour

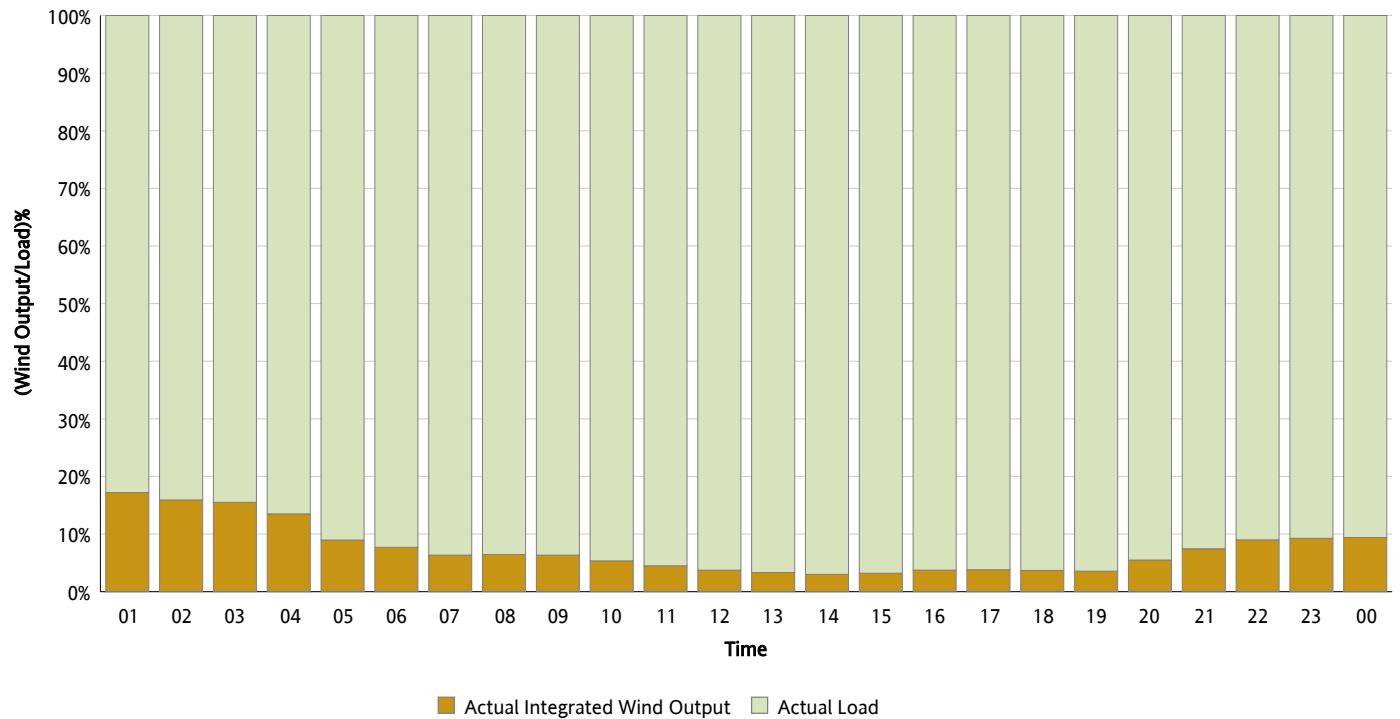
Actual Wind Output as a Percentage of the Total Installed Wind Capacity

02/22/2013



Actual Wind Output as a Percentage of the ERCOT Load

02/22/2013



ERCOT Load vs. Actual Wind Output

02/15/2013 - 02/22/2013

